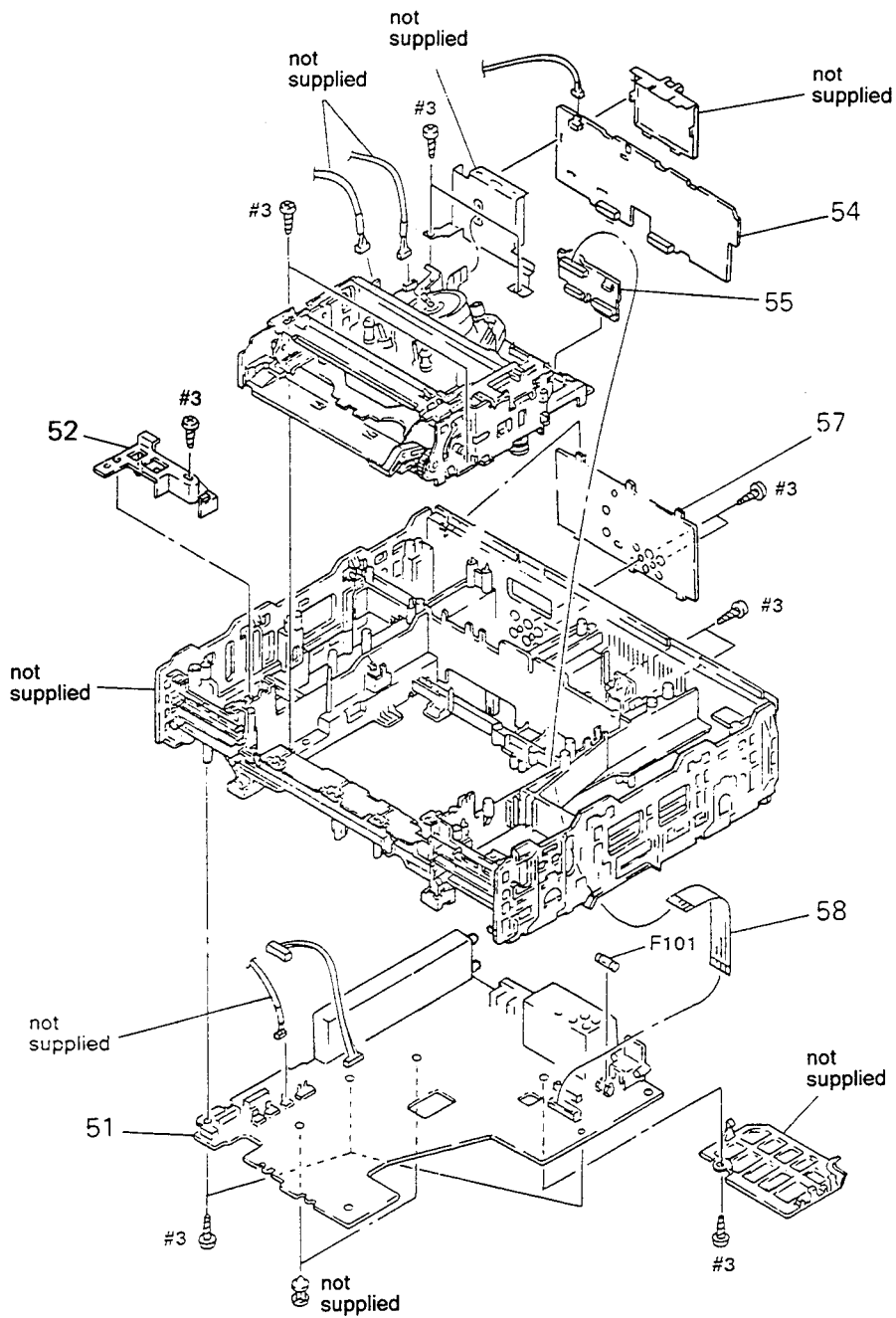


5-1-2. SLV-436EE/X711 CHASSIS

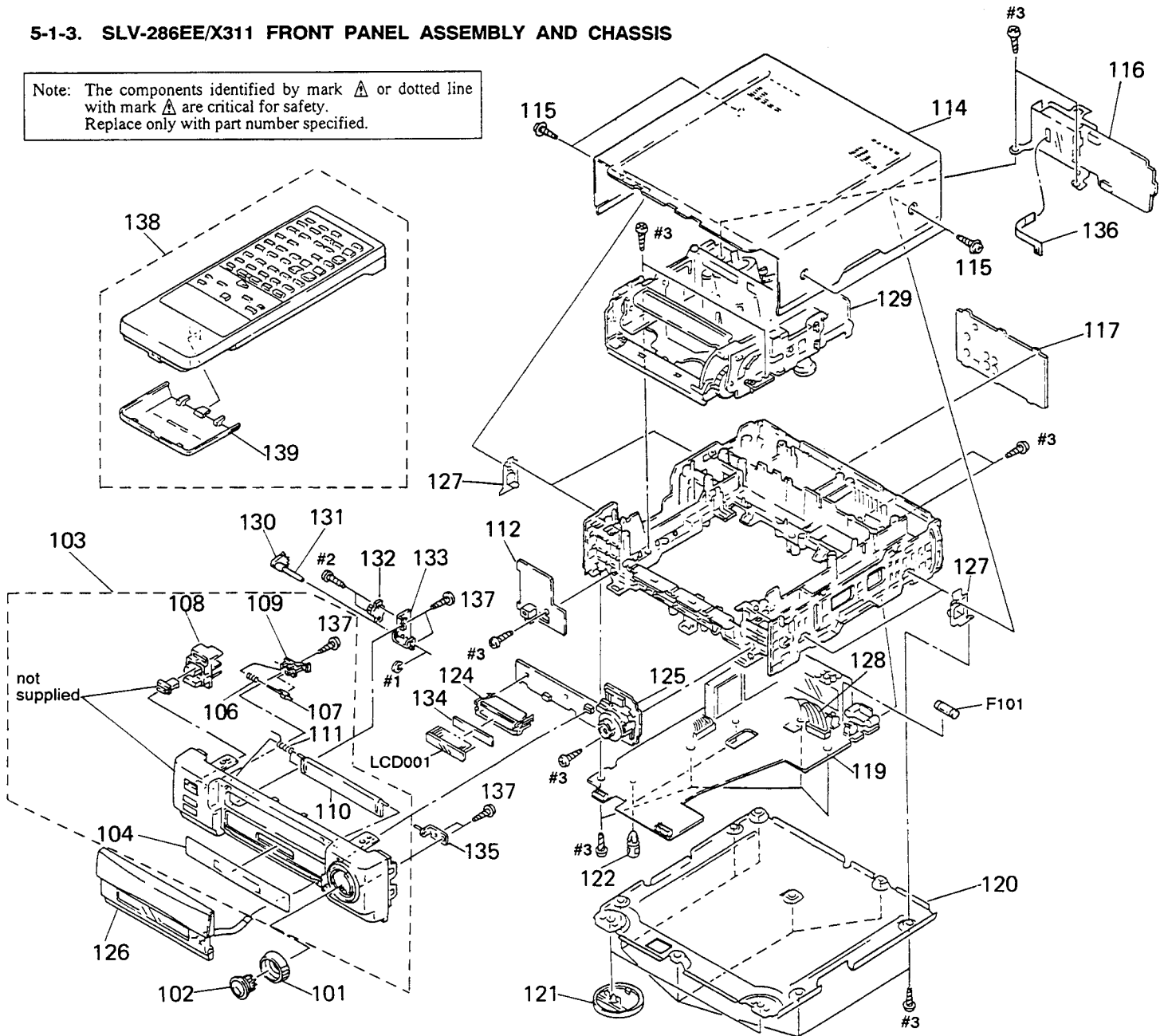


Note: The components identified by mark  $\Delta$  or dotted line with mark  $\Delta$  are critical for safety. Replace only with part number specified.

Ref. No.	Part No.	Description	Remark	Ref. No.	Part No.	Description	Remark
* 51	A-6782-285-A	MA-203 BOARD, COMPLETE (X711:NZ)		* 57	3-957-656-01	PLATE, JACK (PAL), REAR (436EE)	
* 51	A-6782-286-A	MA-203 BOARD, COMPLETE (X711:AS)		* 57	3-957-656-11	PLATE, JACK (PAL), REAR (X711:PS)	
* 51	A-6782-287-A	MA-203 BOARD, COMPLETE (436EE)		* 57	3-957-656-21	PLATE, JACK (PAL), REAR (X711:AS)	
* 51	A-6782-289-A	MA-203 BOARD, COMPLETE (X711:ME, SG, PS)		* 57	3-957-656-31	PLATE, JACK (PAL), REAR (X711:NZ)	
* 52	3-957-215-01	HOLDER (TU), FRAME		* 57	3-957-656-51	PLATE, JACK (PAL), REAR (X711:ME)	
* 54	A-6721-599-A	RV-33 BOARD, COMPLETE (X711:NZ, AS)		* 57	3-957-656-61	PLATE, JACK (PAL), REAR (X711:SG)	
* 54	A-6721-601-A	RV-33 BOARD, COMPLETE (436EE/X711:ME, SG, PS)		58	1-751-794-21	CABLE, FFC (FMD-5)	
* 55	A-6727-516-A	MH-11 BOARD, COMPLETE		$\Delta$ F101	1-576-228-11	FUSE (H. B. C)	

### 5-1-3. SLV-286EE/X311 FRONT PANEL ASSEMBLY AND CHASSIS

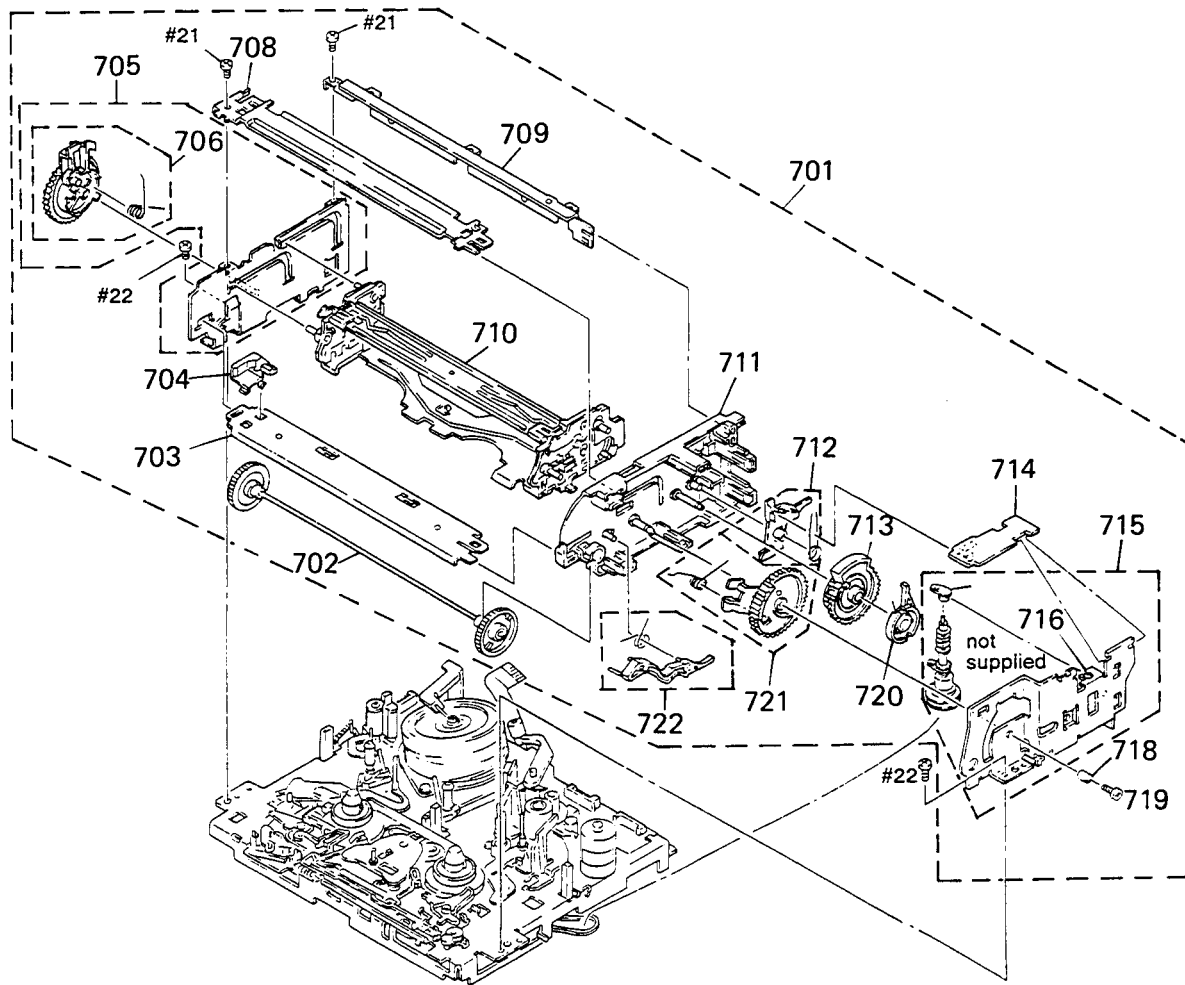
Note: The components identified by mark  $\Delta$  or dotted line with mark  $\Delta$  are critical for safety. Replace only with part number specified.



Ref. No.	Part No.	Description	Remark
101	X-3943-556-1	RING ASSY, SHUTTLE (286EE/436EE)	
101	X-3943-669-1	RING ASSY, SHUTTLE (X311/X711)	
102	X-3943-557-1	BUTTON ASSY, FUNCTION (286EE/436EE)	
102	X-3943-670-1	BUTTON ASSY, FUNCTION (X311/X711)	
103	X-3943-667-1	PANEL ASSY, FRONT (286EE)	
103	X-3943-671-1	PANEL ASSY, FRONT (X311)	
104	3-957-211-01	PLATE, ORNAMENTAL, DOOR	
106	3-957-388-01	SPRING, COMPRESSION	
107	3-944-564-01	CLAW, LOCK	
108	3-957-389-01	BUTTON, POWER/EJECT (286EE/436EE)	
108	3-957-389-21	BUTTON, POWER/EJECT (X311/X711)	
* 109	3-957-548-01	HOLDER, LOCK CLAW	
110	3-954-735-51	DOOR, CASSETTE (286EE)	
110	3-954-735-61	DOOR, CASSETTE (X311)	
111	3-946-614-01	SPRING, FL	
* 112	A-6721-602-A	MF-249 BOARD, COMPLETE	
* 114	3-957-219-11	CASE, UPPER	
115	3-710-901-11	SCREW, TAPPING	
* 116	A-6721-603-A	RV-33 BOARD, COMPLETE	
* 117	3-957-550-01	PLATE, JACK (PAL), REAR (286EE)	
* 117	3-957-550-11	PLATE, JACK (PAL), REAR (X311:PS)	
* 117	3-957-550-41	PLATE, JACK (PAL), REAR (X311:SG)	
* 119	A-6782-288-A	MA-203 BOARD, COMPLETE (X311)	
* 119	A-6782-290-A	MA-203 BOARD, COMPLETE (286EE)	

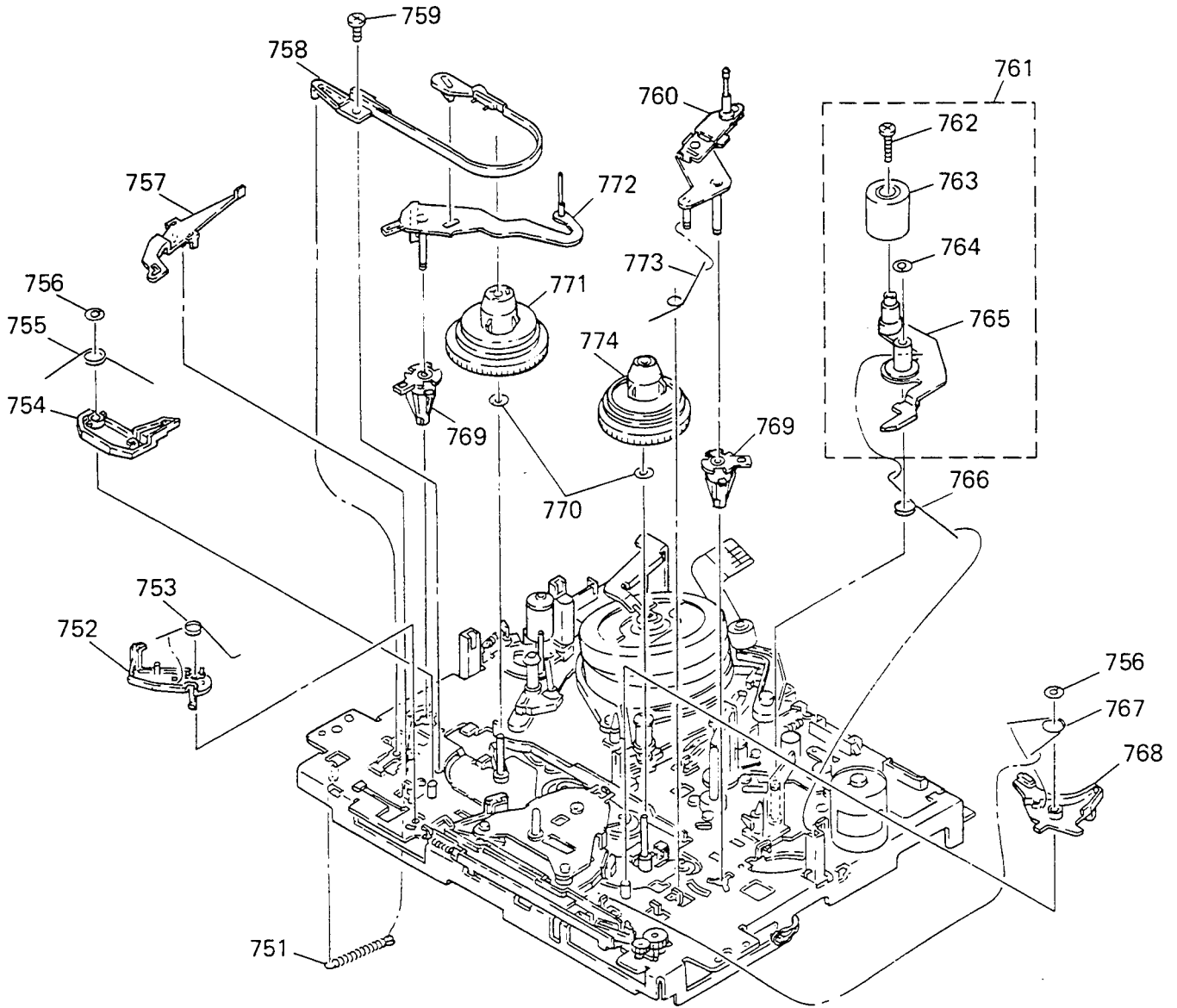
Ref. No.	Part No.	Description	Remark
* 120	3-957-226-01	PLATE, BOTTOM	
121	3-957-246-01	INSULATOR	
122	3-682-057-11	SPACER (SMALL)	
* 124	3-957-206-01	HOLDER, LCD	
* 125	A-6727-551-A	HI-3 BOARD, COMPLETE (286EE)	
* 125	A-6727-555-A	HI-3 BOARD, COMPLETE (X311)	
126	1-467-488-21	SWITCH BLOCK, CONTROL (X311)	
126	1-467-488-61	SWITCH BLOCK, CONTROL (286EE)	
* 127	3-957-227-01	STOPPER (NNX), UPPER CASE	
128	1-751-794-21	CABLE, FFC (FMD-5)	
* 129	A-6727-552-A	MH-12 BOARD, COMPLETE	
130	3-957-382-01	GEAR, FULCRUM	
* 131	3-957-383-01	SHAFT, FULCRUM GEAR	
132	3-319-224-11	DAMPER, SMALL	
* 133	3-957-381-01	PLATE, FULCRUM (LEFT), DOOR	
* 134	3-957-230-01	ILLUMINATOR	
* 135	X-3943-587-1	PLATE (RIGHT) ASSY, FULCRUM	
136	1-651-145-11	FP-88 FLEXIBLE BOARD	
137	4-921-277-11	SCREW (B2.6X8), TAPPING, BIND	
138	1-467-486-21	REMOTE COMMANDER (RMT-V132J)	
139	3-948-734-01	COVER, BATTERY	
$\Delta$ F101	1-576-228-11	FUSE (H.B.C)	
LCD001	1-810-409-11	DISPLAY PANEL, LIQUID CRYSTAL (X311/X711)	
LCD001	1-810-409-21	DISPLAY PANEL, LIQUID CRYSTAL (286EE/436EE)	

### 5-1-4. FL CASSETTE COMPARTMENT ASSEMBLY



Ref. No.	Part No.	Description	Remark	Ref. No.	Part No.	Description	Remark
701	3-946-965-01	FL ASSY		712	3-946-991-01	LEVER ASSY, SWITCH	
702	3-946-983-01	GEAR ASSY, SYNCHRO		713	3-946-980-01	WHEEL ASSY, WORM	
703	3-946-993-01	ANGLE, FRONT		714	3-946-992-01	PWB (B) ASSY, FL	
704	3-946-994-01	GUIDE (L), CASSETTE		715	3-946-990-01	COVER ASSY, FRAME	
705	3-946-978-01	FRAME (L) ASSY		716	3-947-013-01	COVER, FRAME	
706	3-947-010-01	GEAR (L) ASSY, LIFT		717	3-947-020-01	BEARING (A), F WORM	
707	3-947-009-01	RIVETING, FRAME (L)		718	3-948-705-01	COLLAR	
708	3-946-995-01	PLATE, UPPER		719	3-948-706-01	SCREW (3X6)	
709	3-947-008-01	ANGLE, REAR		720	3-946-981-01	ARM ASSY, SWITCH	
710	3-946-979-01	HOLDER ASSY, CASSETTE		721	3-946-982-01	GEAR (R) ASSY, LIFT	
711	3-947-011-01	FRAME (R)		722	3-947-012-01	LEVER ASSY, LIFT	

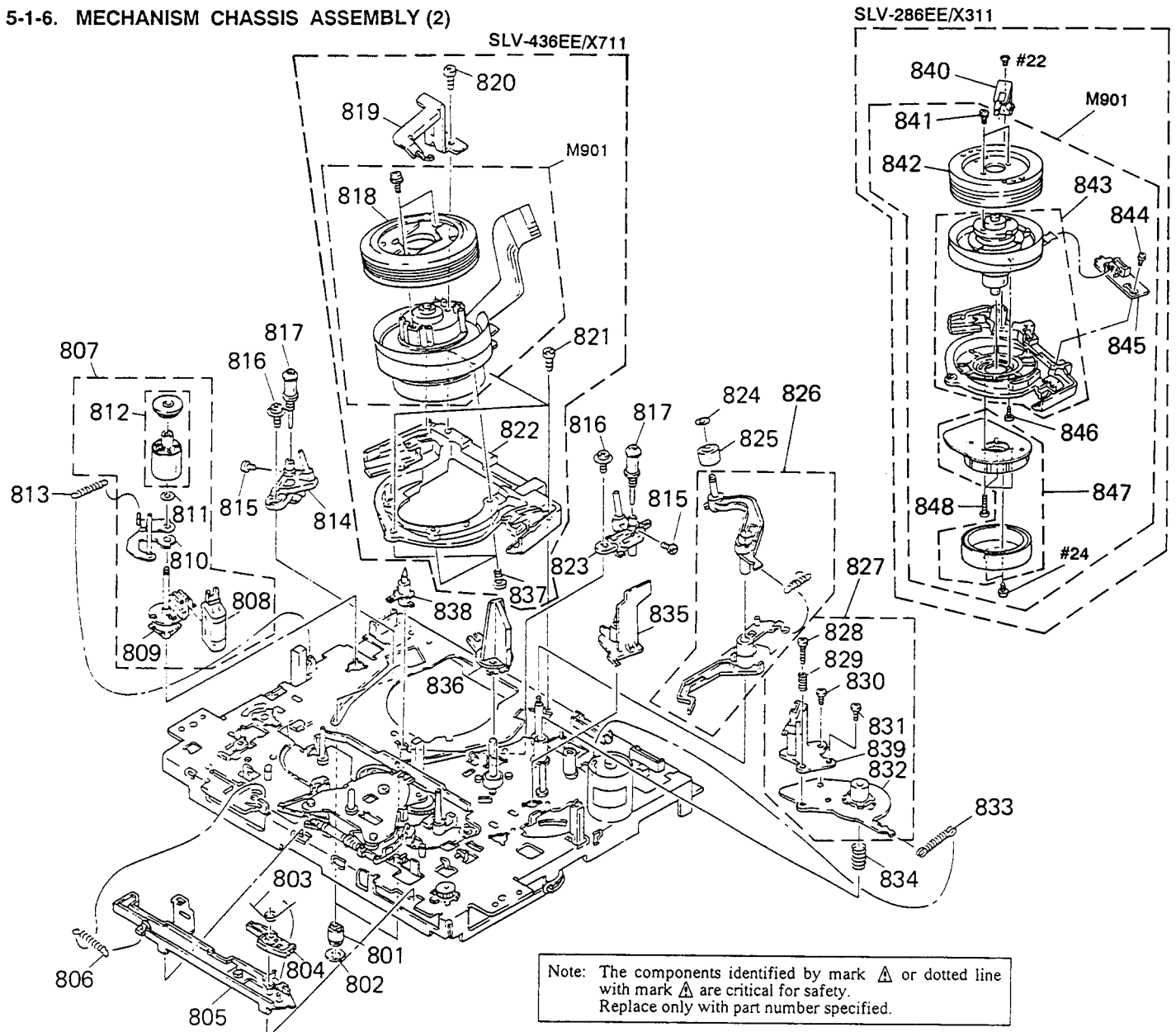
5-1-5. MECHANISM CHASSIS ASSEMBLY (1)



Ref. No.	Part No.	Description	Remark
751	3-946-937-01	SPRING, BT	
752	3-946-959-01	ARM, REC	
753	3-946-947-01	SPRING, REC ARM	
754	3-946-914-01	ARM, SS BRAKE	
755	3-946-915-01	SPRING, SS ARM	
756	3-946-916-01	CUT (3X6X0.5), HLW	
757	3-946-946-01	ARM, REC SWITCH	
758	3-946-935-01	BAND ASSY, BT	
759	3-946-966-01	SCREW (2.6X5), +C TIGHT	
760	3-947-021-01	ARM ASSY, RG	
761	3-947-004-01	ARM ASSY, P ROLLER	
762	3-947-007-01	SCREW (2.6X4), + BIND	

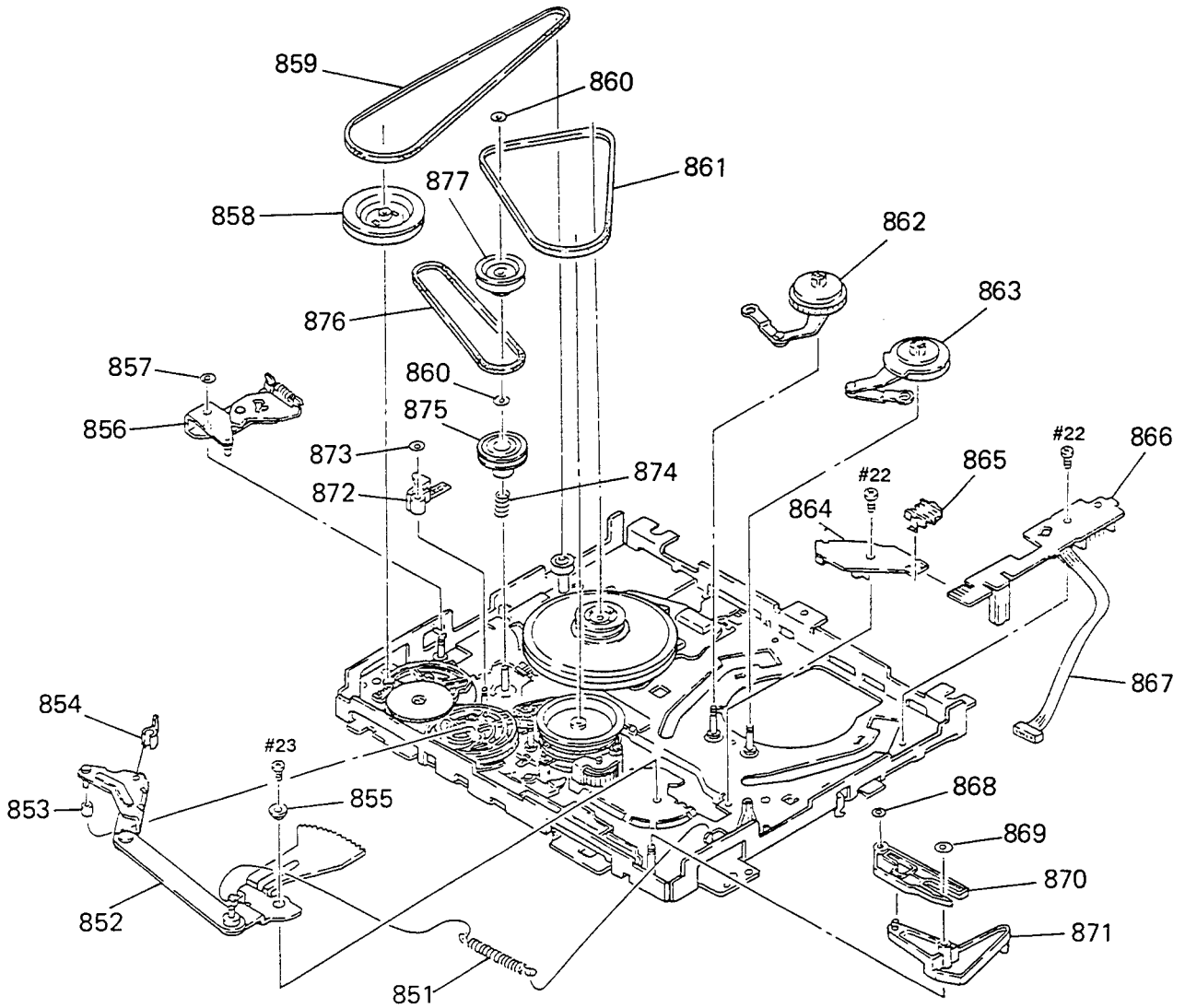
Ref. No.	Part No.	Description	Remark
763	3-947-005-01	PINCH ROLLER	
764	3-947-024-01	HL (C) (3.5X5.5X0.5)	
765	3-947-006-01	RIVETING, P ROLLER ARM	
766	3-947-025-01	SPRING, P ARM	
767	3-946-913-01	SPRING, TS ARM	
768	3-946-912-01	ARM ASSY, TS BRAKE	
769	3-946-936-01	METAL, BT ARM	
770	3-947-003-01	WASHER (2.5X4.5X0.5)	
771	3-947-997-01	TABLE ASSY, S REEL	
772	3-946-934-01	ARM ASSY, TENSION	
773	3-947-022-01	SPRING, RG ARM	
774	3-947-002-01	TABLE ASSY, T REEL	

5-1-6. MECHANISM CHASSIS ASSEMBLY (2)



Ref. No.	Part No.	Description	Remark	Ref. No.	Part No.	Description	Remark
801	3-947-077-01	BOSS, LOADING		826	3-947-080-01	LEVER ASSY, CLEANING	
802	3-947-079-01	HL (C) (4. 7X7X0. 5)		827	3-947-081-01	AH (BASE) ASSY	
803	3-947-016-01	SPRING, TRIGGER HOOK		828	3-946-928-01	SCREW, AZIMUTH SP	
804	3-947-014-01	HOOK, BK TRIGGER		829	3-947-083-01	SP, AZIMUTH	
805	3-947-001-01	PLATE, SLIDE, BK		830	3-946-930-01	SCREW (2. 6X7), + PAN	
806	3-947-015-01	SPRING, BK SLIDE		831	3-946-929-01	SCREW (3X6), PAN	
807	3-946-972-01	FE (BASE) ASSY		832	3-946-931-01	HOLDER ASSY, AH (BASE)	
808	3-946-973-01	HEAD (HV113001), FE		833	3-946-932-01	SPRING, X ADJ	
809	3-946-974-01	HEAD (HVFHQ0003), FE		834	3-946-933-01	SPRING, AH (BASE)	
810	3-946-976-01	ARM ASSY, F POST		835	3-947-069-01	GUIDE BLOCK	
811	3-946-977-01	CUT (1. 6X3. 8X0. 3), W		836	3-947-068-01	GUIDE ASSY, TAPE	
812	3-946-975-01	ROLLER ASSY, IMPEDANCE		837	3-949-181-01	SCREW (3X8), + PAN	
813	3-948-474-01	SPRING, F POST		838	3-947-070-01	BISS, CASSETTE GUIDE	
814	3-947-071-01	L BLOCK (L) ASSY		839	3-947-082-01	HEAD (HVMZ1136), ACE	
815	3-947-074-01	SCREW (2X2. 3)		840	3-947-999-01	GROUND ASSY, DRUM (286EE/X311)	
816	3-947-078-01	SCREW (2. 6X3), +CUP		841	3-947-060-01	SCREW (3X8) (286EE/X311)	
817	3-947-073-01	POST, ROLLER		842	3-949-187-01	DRUM (TPB3-011), UPPER (286EE/X311)	
818	8-848-540-01	UPPER DRUM ASSY (DZR-21-R) (436EE/X711)		843	3-947-046-01	CYLINDER (MOUNT) (286EE/X311)	
819	3-949-180-01	GROUND ASSY, SD		844	3-947-064-01	SCREW (2. 6X6), S TIGHT (286EE/X311)	
820	3-949-182-01	SCREW (2. 6X5), +C TIGHT		845	3-947-047-01	PC BOARD ASSY, VIDEO OUT (REC/PB HEAD) (286EE/X311)	
821	3-947-066-01	SCREW (3X7), +C TIGHT		846	3-947-06-01	SCREW (2X6), CAMERA B TIGHT (286EE/X311)	
822	3-949-179-01	BASE ASSY, CYLINDER		847	3-947-043-01	MOTOR (E20EL), DRUM (286EE/X311)	
823	3-947-072-01	L BLOCK (R) ASSY		848	3-947-065-01	SCREW (2. 6X16) (286EE/X311)	
824	3-947-625-01	CUT (2. 1X5X0. 3), POLY-SLIDER(W)		ΔM901	8-848-597-11	DRUM ASSY (DZH-48A-R) (436EE/X711)	
825	3-947-624-01	ROLLER, CLEANING		ΔM901	3-949-186-01	CYLINDER ASSY (DRUM) (286EE/X311)	

5-1-7. MECHANISM CHASSIS ASSEMBLY (3)

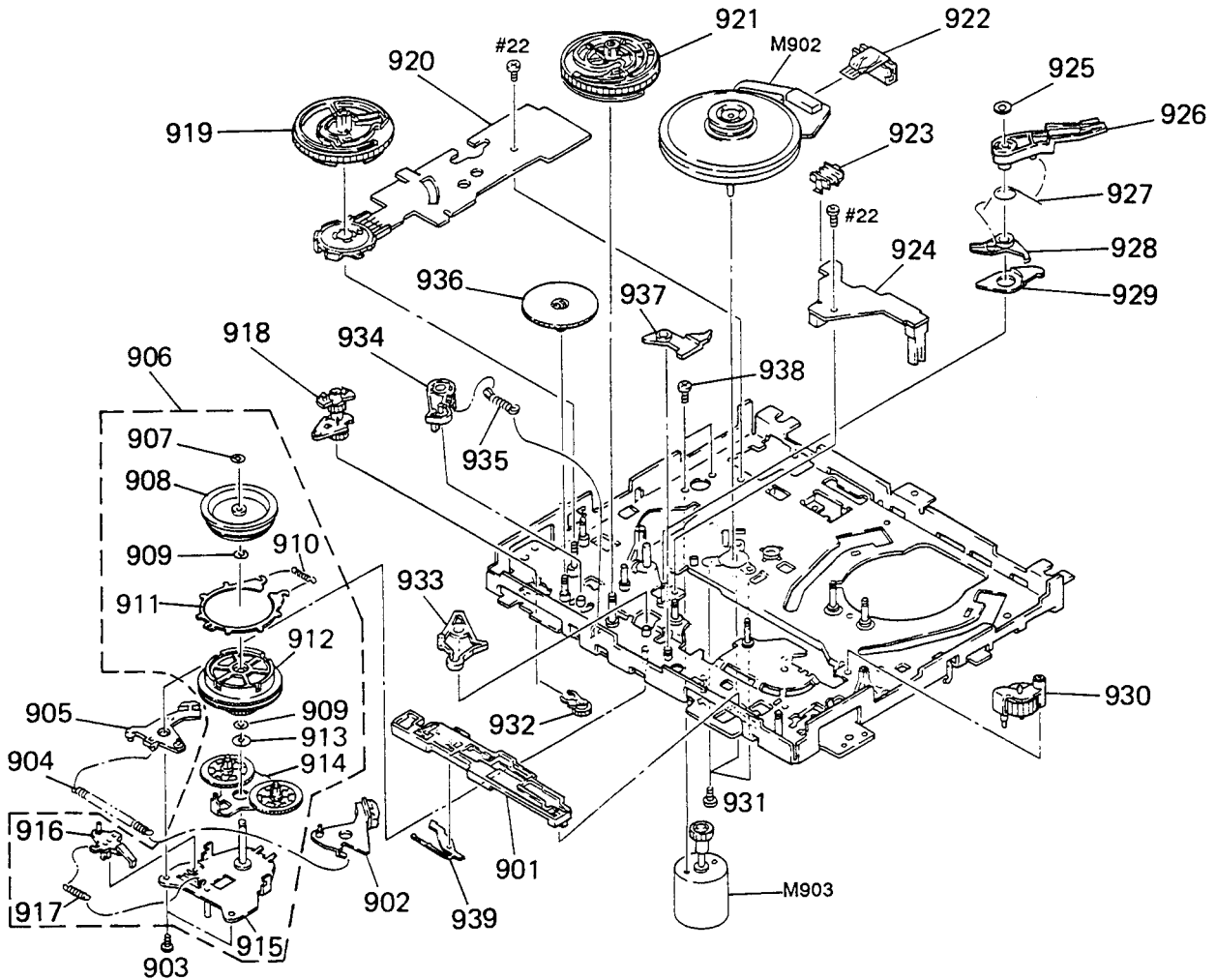


Ref. No.	Part No.	Description	Remark
851	3-946-927-01	SPRING, L GR PLATE	
852	3-946-926-01	RIVETING, L JOINT PLATE	
853	3-946-941-01	ROLLER, CAM	
854	3-946-945-01	STOPPER, L LEVER	
855	3-946-940-01	COLLAR, L GEAR PLATE	
856	3-947-026-01	PLATE ASSY	
857	3-947-027-01	CUT (3X6X0.5), HLW	
858	3-946-921-01	PULLEY, LOADING	
859	3-946-923-01	BELT, LOADING	
860	3-946-963-01	CUT (2.1X4X0.4)	
861	3-946-999-01	BELT, DRIVE	
862	3-947-075-01	GEAR (L) ASSY, T THREADING	
863	3-947-076-01	GEAR (R) ASSY, T THREADING	
864	3-946-956-01	PWB ASSY, S SENSOR	

Ref. No.	Part No.	Description	Remark
865	3-946-948-01	JOINER (MCN40011), PWB	
866	3-949-184-01	PWB (B) ASSY, DM	
867	3-949-190-01	WIRE ASSY, DM	
868	3-946-967-01	CUT (2.1X4X0.5)	
869	3-946-968-01	CUT (3X7.5X0.5), HLW	
870	3-946-939-01	PLATE, UP, BT PULL	
871	3-946-938-01	LEVER, BT	
872	3-946-961-01	ARM, BREAKER	
873	3-946-964-01	CUT (2.1X5X0.5)	
874	3-946-960-01	SPRING, BREAKER	
875	3-946-951-01	PULLEY, EJECT	
876	3-946-962-01	BELT, FL	
877	3-946-950-01	PULLEY ASSY, RE	

### 5-1-8. MECHANISM CHASSIS ASSEMBLY (4)

Note: The components identified by mark  $\Delta$  or dotted line with mark  $\Delta$  are critical for safety.  
Replace only with part number specified.



Ref. No.	Part No.	Description	Remark	Ref. No.	Part No.	Description	Remark
901	3-946-943-01	PLATE, SLIDE, M		922	3-947-029-01	LEAD ASSY, CM	
902	3-947-017-01	ARM (L) ASSY, BRAKE		923	3-946-948-01	JOINER (MCN40011), PWB	
903	3-947-000-01	SCREW (2X4), +		924	3-946-955-01	PWB ASSY, T SENSOR	
904	3-947-019-01	SPRING, BRAKE ARM		925	3-947-035-01	CUT (2.6X6X0.5)	
905	3-947-018-01	ARM (R) ASSY, BRAKE		926	3-947-033-01	LEVER, CB RETURN	
906	3-951-590-01	PLATE ASSY, SUB		927	3-947-031-01	SPRING, C BRAKE	
907	3-946-996-01	CUT (2.1X5X0.3), P.W.		928	3-947-032-01	LEVER, C BRAKE	
908	3-946-984-01	PULLEY ASSY, CLUTCH		929	3-947-030-01	ARM ASSY, C BRAKE	
909	3-946-997-01	HL (W) (2.5X4.5X0.25)		930	3-946-998-01	ARM ASSY, RF GEAR	
910	3-946-986-01	SPRING, CHANGE RING		931	3-947-034-01	SCREW (2.6X7), + C TIGHT	
911	3-946-985-01	RING, CHANGE		932	3-946-920-01	ARM ASSY, TRG GEAR	
912	3-951-591-01	CLUTCH ASSY		933	3-946-942-01	LEVER, M	
913	3-946-989-01	HL (W) (C) (6.4X9X0.3)		934	3-946-910-01	ARM, BK RELEASE	
914	3-946-988-01	PLATE ASSY, GEAR		935	3-946-911-01	SPRING, RESET	
915	3-952-168-01	RIVETING, SUB PLATE		936	3-946-922-01	GEAR, LOADING	
916	3-946-987-01	ARM, CENTER RING		937	3-946-952-01	STOPPER, GEAR PLATE	
917	3-947-998-01	SPRING, CENTER RING ARM		938	3-946-918-01	SCREW (3X4)	
918	3-946-919-01	METAL ASSY, L PULLEY		939	3-946-944-01	LEVER	
919	3-946-924-01	GEAR, P CAM		940	3-946-958-01	SWITCH, MODE	
920	3-946-954-01	PWB ASSY, BASE		$\Delta$ M902	3-947-028-01	MOTOR (F2QKB38) (CAPSTAN)	
921	3-946-925-01	GEAR, L CAM		M903	3-946-917-01	MOTOR ASSY, L (LOADING)	