

PARTS LIST

LISTE PIECES DETACHEES

ERSATZTEILLISTE

LISTA PARTI DI RICAMBIO

LISTA DE PIEZAS DE REPUESTO

Chassis R8000

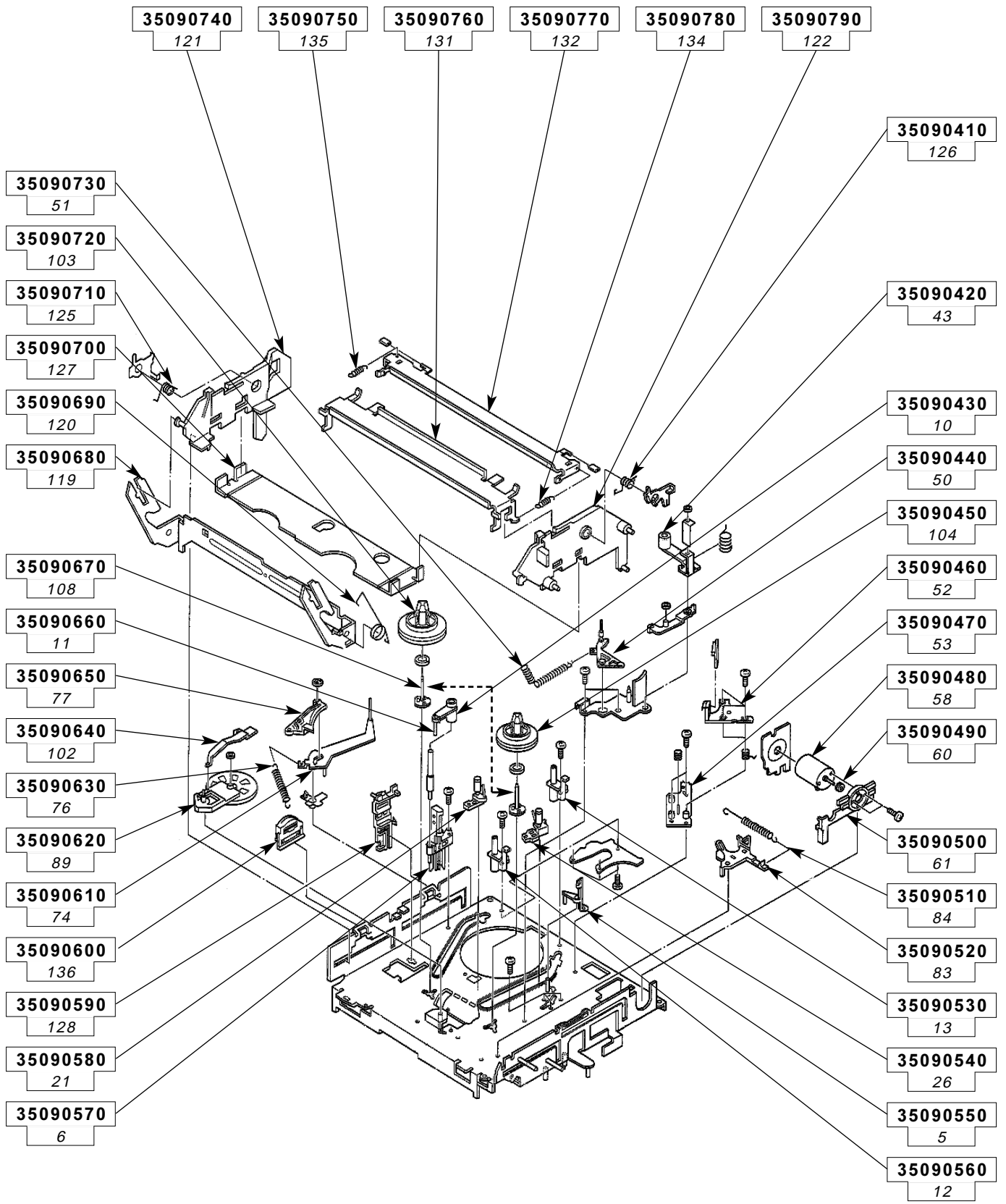
MECHANISM 1					
MECANIQUE 1					
LAUFWERK 1					
MECCANICA 1					
MECANISMO 1					
10	TENSION STUD BASE TENSION STUD BASE TENSION STUD BASE TENSION STUD BASE TENSION STUD BASE	35090430	122	SIDE HOLDER (R) SIDE HOLDER (R) SIDE HOLDER (R) SIDE HOLDER (R) SIDE HOLDER (R)	35090790
102	IDLER LEVER IDLER LEVER IDLER LEVER IDLER LEVER IDLER LEVER	35090640	125	TORSION SPRING (L) RESSORT (L) FEDER (L) MOLLA (L) RESORTE (L)	35090710
103	SUPPLY REEL DISK PORTE BOBINE DEBITEUR BANDTELLER ABWICKELSEITE PORTABOBINA DI SVOLGIMENTO PORTABOBINA DE CARGA	35090720	126	TORSION SPRING (R) TORSION SPRING (R) TORSION SPRING (R) TORSION SPRING (R) TORSION SPRING (R)	35090410
104	TAKE UP REEL DISK PORTE BOBINE RECEPT BANDTELLER AUFWICKELSEITE PORTABOBINA AVVOLGIMENTO PORTABOBINA RECEPTOR	35090450	127	CASSETTE HOLDER CASSETTE HOLDER CASSETTE HOLDER CASSETTE HOLDER CASSETTE HOLDER	35090700
108	REEL SHAFT REEL SHAFT REEL SHAFT REEL SHAFT REEL SHAFT	35090670	128	GUIDE RAIL GUIDE RAIL GUIDE RAIL GUIDE RAIL GUIDE RAIL	35090590
11	TENSION STUD TENSION STUD TENSION STUD TENSION STUD TENSION STUD	35090660	13	UV CATCHER ASSY (TAKE UP) UV CATCHER ASSY (TAKE UP) UV CATCHER ASSY (TAKE UP) UV CATCHER ASSY (TAKE UP) UV CATCHER ASSY (TAKE UP)	35090530
119	DRIVE ARM DRIVE ARM DRIVE ARM DRIVE ARM DRIVE ARM	35090680	131	TOP GUIDE TOP GUIDE TOP GUIDE TOP GUIDE TOP GUIDE	35090760
12	UV CATCHER (SUPPLY) UV CATCHER (SUPPLY) UV CATCHER (SUPPLY) UV CATCHER (SUPPLY) UV CATCHER (SUPPLY)	35090560	132	HOLD PLATE HOLD PLATE HOLD PLATE HOLD PLATE HOLD PLATE	35090770
120	TORSION SPRING RESSORT A EPINGLE FEDER MOLLA DI TORSIONE RESORTE HORQUILLA	35090690	134	TENSION SPRING RESSORT FEDER MOLLA RESORTE	35090780
121	SIDE HOLDER (L) SIDE HOLDER (L) SIDE HOLDER (L) SIDE HOLDER (L) SIDE HOLDER (L)	35090740	135	TENSION SPRING RESSORT FEDER MOLLA RESORTE	35090750
			136	ROLLER CAM ASSY ROLLER CAM ASSY ROLLER CAM ASSY ROLLER CAM ASSY ROLLER CAM ASSY	35090600
			21	POLE BASE ASSY (SUPPLY) POLE BASE ASSY (SUPPLY) POLE BASE ASSY (SUPPLY) POLE BASE ASSY (SUPPLY) POLE BASE ASSY (SUPPLY) POLE BASE ASSY (SUPPLY)	35090580
			26	POLE BASE ASSY (TAKE UP) POLE BASE ASSY (TAKE UP) POLE BASE ASSY (TAKE UP) POLE BASE ASSY (TAKE UP) POLE BASE ASSY (TAKE UP)	35090540
			43	PINCH ROLLER ARM ASSY GALET PRESSEUR EQUIPE ANDRUCKROLLE KPL. RULLO DI PRESSIONE COMPLETO RODILLO PRENSOR EQUIPADO	35090420
			5	GUIDE POLE GUARD GUIDE POLE GUARD GUIDE POLE GUARD GUIDE POLE GUARD GUIDE POLE GUARD	35090550
			50	GUIDE ARM ASSY GUIDE ARM ASSY GUIDE ARM ASSY GUIDE ARM ASSY GUIDE ARM ASSY	35090440
			51	TENSION SPRING RESSORT FEDER MOLLA RESORTE	35090730
			52	A/C HEAD UNIT TETE AUDIO/ASSERVISSEMENT AUDIO/SERVO KOPF TESTINA AUDIO/ASSERVIMENT CABEZA AUDIO/SERVO	35090460
			53	HEAD BASE HEAD BASE HEAD BASE HEAD BASE HEAD BASE	35090470
			58	LOADING MOTOR MOTEUR CONTROLE FONCTIONS LADEMOTOR MOTORE MOTOR	35090480
			6	FULL ERASE HEAD TETE D'EFFACEMENT LOESCHKOPF TESTINA DI CANCELLAZIONE CABEZA DE BORRADO	35090570
			60	MOTOR PULLEY POULIE MOTEUR CONTROLE FONCTIONS MOTORROLLE PULEGGIA DEL MOTORE POLEA DE MOTOR	35090490

R : RECYCLED PART
: PIECE RECYCLEE
: AUSTAUSCHTEILE
: RICAMBIO RICICLATO
: MODULO REPROCESADO

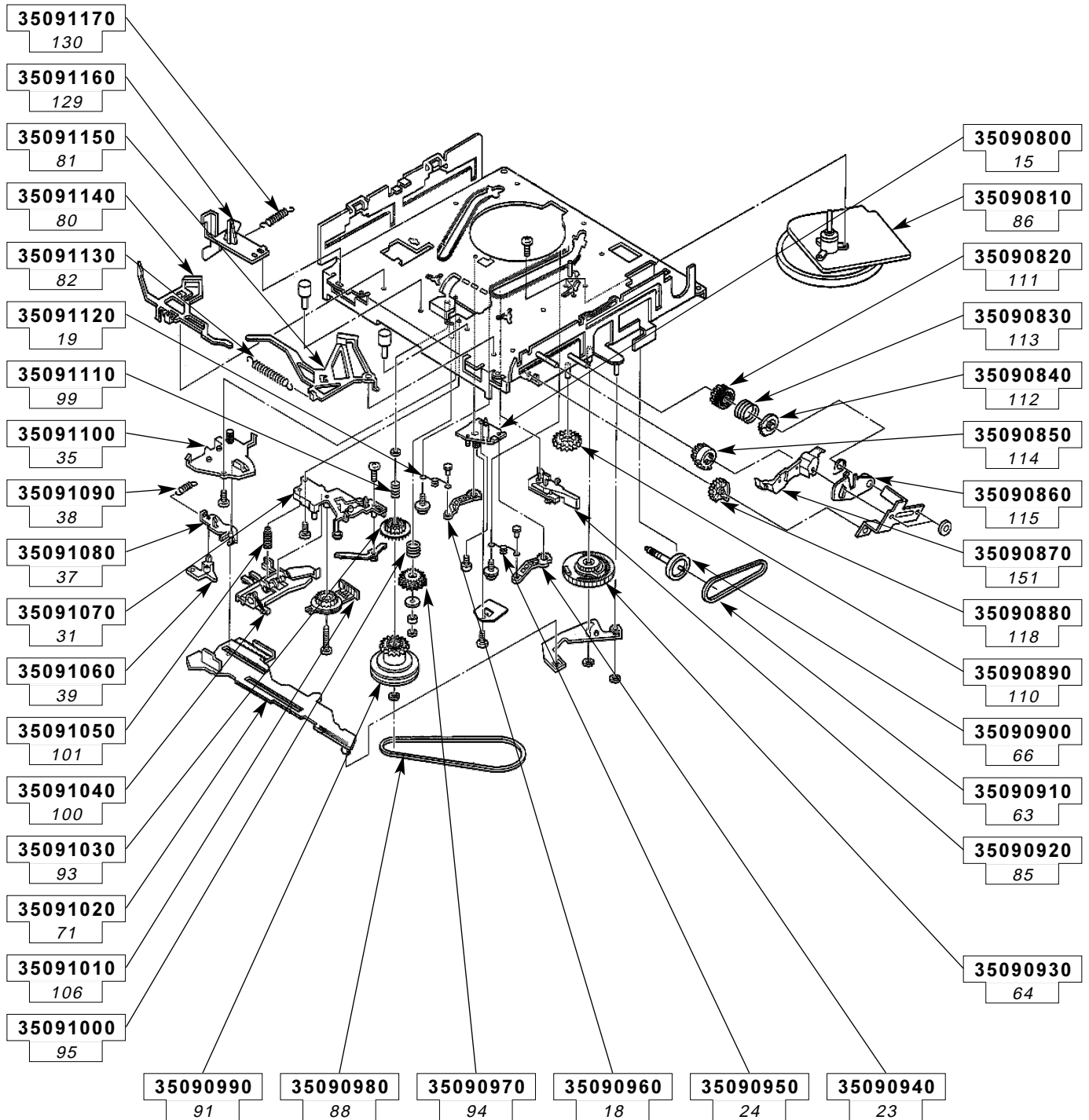
For any requests, please contact THOMSON multimedia after sales service area
 Pour toutes précisions, contactez votre service apres vente local THOMSON multimedia
 Für weitere Auskünfte, wenden Sie sich bitte an die THOMSON multimedia Kundendienst
 Per precisazioni, contattare l'assistenza tecnica THOMSON multimedia
 Para cualquier pregunta, por favor contactar con el responsable de zona del servicio postventa de THOMSON multimedia

07 / 1999 **35091410**
REV. N° 0 00 / 00 **00000000**
1/4

61	MOTOR GUIDE GUIDE MOTEUR MOTOR GUIDE MOTOR GUIDE MOTOR GUIDE	35090500	114	RELAY GEAR RELAY GEAR RELAY GEAR RELAY GEAR RELAY GEAR	35090850	63	BELT,LOADING MOTOR COURROIE CAOUTCHOUC ANTRIEBSRIEMEN CINGHIA DI GOMMA CORREA DE GOMA	35090910
74	TENSION ARM ASSY TENSION ARM ASSY TENSION ARM ASSY TENSION ARM ASSY TENSION ARM ASSY	35090610	115	OPENER GUIDE OPENER GUIDE OPENER GUIDE OPENER GUIDE OPENER GUIDE	35090860	64	CAM GEAR CONTROL CAME CDE FONCTIONS NOCKENZAHNRAD CAMMA RUOTA DENTATA LEVA DENTADA	35090930
76	TENSION SPRING RESSORT FEDER MOLLA RESORTE	35090630	118	DRIVE GEAR DRIVE GEAR DRIVE GEAR DRIVE GEAR DRIVE GEAR	35090880	66	WORM GEAR WORM GEAR WORM GEAR WORM GEAR WORM GEAR	35090900
77	TENSION BRAKE ASSY TENSION BRAKE ASSY TENSION BRAKE ASSY TENSION BRAKE ASSY TENSION BRAKE ASSY	35090650	129	REG SAFTY LEVER REG SAFTY LEVER REG SAFTY LEVER REG SAFTY LEVER REG SAFTY LEVER	35091160	71	CONTROL PLATE CONTROL PLATE CONTROL PLATE CONTROL PLATE CONTROL PLATE	35091020
83	SUB BRAKE ASSY (TAKE UP) SUB BRAKE ASSY (TAKE UP) SUB BRAKE ASSY (TAKE UP) SUB BRAKE ASSY (TAKE UP) SUB BRAKE ASSY (TAKE UP)	35090520	130	TENSION SPRING RESSORT FEDER MOLLA RESORTE	35091170	80	MAIN BRAKE ASSY (SUPPLY) MAIN BRAKE ASSY (SUPPLY) MAIN BRAKE ASSY (SUPPLY) MAIN BRAKE ASSY (SUPPLY) MAIN BRAKE ASSY (SUPPLY)	35091140
84	TENSION SPRING RESSORT FEDER MOLLA RESORTE	35090510	15	LOADING ARM GEAR SHAFT LOADING ARM GEAR SHAFT LOADING ARM GEAR SHAFT LOADING ARM GEAR SHAFT LOADING ARM GEAR SHAFT	35090800	81	MAIN BRAKE ASSY (TAKE-UP) MAIN BRAKE ASSY (TAKE-UP) MAIN BRAKE ASSY (TAKE-UP) MAIN BRAKE ASSY (TAKE-UP) MAIN BRAKE ASSY (TAKE-UP)	35091150
89	IDLER ARM ASSY IDLER ARM ASSY IDLER ARM ASSY IDLER ARM ASSY IDLER ARM ASSY	35090620	151	DOOR OPENER DOOR OPENER DOOR OPENER DOOR OPENER DOOR OPENER	35090870	82	TENSION SPRING RESSORT FEDER MOLLA RESORTE	35091130
MECHANISM 2 MECANIQUE 2 LAUFWERK 2 MECCANICA 2 MECANISMO 2			18	LOADING ARM GEAR (SPPLY) LOADING ARM GEAR (SPPLY) LOADING ARM GEAR (SPPLY) LOADING ARM GEAR (SPPLY) LOADING ARM GEAR (SPPLY)	35090960	85	CAPSTAN BRAKE ASSY CAPSTAN BRAKE ASSY CAPSTAN BRAKE ASSY CAPSTAN BRAKE ASSY CAPSTAN BRAKE ASSY	35090920
			19	TORSION ARM RESSORT A EPINGLE FEDER MOLLA DI TORSIONE RESORTE HORQUILLA	35091120	86	CAPSTAN MOTOR MOTEUR CABESTAN CAPSTAN MOTOR MOTORE CABESTANO MOTOR CABESTANO	35090810
			23	LOADING ARM GEAR (TAKE UP) LOADING ARM GEAR (TAKE UP) LOADING ARM GEAR (TAKE UP) LOADING ARM GEAR (TAKE UP) LOADING ARM GEAR (TAKE UP)	35090940	88	RUBBER BELT,CAPSTAN MOTOR COURROIE CAOUTCHOUC ANTRIEBSRIEMEN CINGHIA DI GOMMA CORREA DE GOMA	35090980
			24	SPRING TORSION ARM RESSORT A EPINGLE FEDER MOLLA DI TORSIONE RESORTE HORQUILLA	35090950	91	SUPPLY CLUTCH UNIT ROUE PLASTIQUE EMBRAYAGE ABWICKELKUPPLUNG INNESTO SVOLGERE EMBRAGUE DESARROLLAR	35090990
			31	ROTARY ENCODER GUIDE ROTARY ENCODER GUIDE ROTARY ENCODER GUIDE ROTARY ENCODER GUIDE ROTARY ENCODER GUIDE	35091070	93	CLUTCH GEAR 1 CLUTCH GEAR 1 CLUTCH GEAR 1 CLUTCH GEAR 1 CLUTCH GEAR 1	35091030
			35	CONTROL PLATE GUIDE CONTROL PLATE GUIDE CONTROL PLATE GUIDE CONTROL PLATE GUIDE CONTROL PLATE GUIDE	35091100	94	DIRECT GEAR DIRECT GEAR DIRECT GEAR DIRECT GEAR DIRECT GEAR	35090970
			37	TAKE UP LEVER TAKE UP LEVER TAKE UP LEVER TAKE UP LEVER TAKE UP LEVER	35091080	95	COMPRESSION SPRING RESSORT FEDER MOLLA RESORTE	35091000
			38	TENSION SPRING RESSORT FEDER MOLLA RESORTE	35091090	99	COMPRESSION SPRING,C.GEAR 1 RESSORT FEDER MOLLA RESORTE	35091110
			39	T.UP HEAD T.UP HEAD T.UP HEAD T.UP HEAD T.UP HEAD	35091060			
			100	CHANGE LEVER ASSY CHANGE LEVER ASSY CHANGE LEVER ASSY CHANGE LEVER ASSY CHANGE LEVER ASSY	35091040			
101	COMPRESSION SPRING RESSORT FEDER MOLLA RESORTE	35091050						
106	ROTARY ENCODER ROTARY ENCODER ROTARY ENCODER ROTARY ENCODER ROTARY ENCODER	35091010						
110	CASSETTE GEAR CASSETTE GEAR CASSETTE GEAR CASSETTE GEAR CASSETTE GEAR	35090890						
111	LIMIT GEAR (1) LIMIT GEAR (1) LIMIT GEAR (1) LIMIT GEAR (1) LIMIT GEAR (1)	35090820						
112	LIMIT GEAR (2) LIMIT GEAR (2) LIMIT GEAR (2) LIMIT GEAR (2) LIMIT GEAR (2)	35090840						



MECHANISM 1 / MECANIQUE 1 / LAUFWERK 1 / MECCANICA 1 / MECANISMO 1



MECHANISM 2 / MECANIQUE 2 / LAUFWERK 2 / MECCANICA 2 / MECANISMO 2

R8000

4/4

The description and characteristics given here are of informative significance only, and non committal. To keep up the high quality of our products, we reserve the right to make any changes or improvement without previous notice. • Les descriptions et caractéristiques figurant sur ce document sont données à titre d'information et non d'engagement. En effet, soucieux de la qualité de nos produits, nous nous réservons le droit d'effectuer, sans préavis, toute modification ou amélioration. • Die Beschreibungen und Daten in dieser Anleitung dienen nur zur Information und sind nicht bindend. Um die Qualität unserer Produkte ständig zu verbessern, behalten wir uns das Recht auf Änderungen vor. • Le descrizioni e le caratteristiche date su questo documento sono fornite a semplice titolo informativo e senza impegno. Ci riserviamo il diritto di eseguire, senza preavviso, qualsiasi modifica o miglioramento. • Las descripciones y características que figuran en este documento se dan a título de información y no de compromiso. En efecto, en bien de la calidad de nuestros productos, nos reservamos el derecho de efectuar, sin previo aviso, cualquier modificación o mejora.